



## **SAMPLE REPORTS**

Real time reports for:

- Ring errors
- Store sales
- Sales by category
- Store comparison
- Alerts

Real time access to:

- Shrinkage indicators
- Promotional feedback
- Employee utilization



**ItsRealTime.com<sup>TM</sup>**

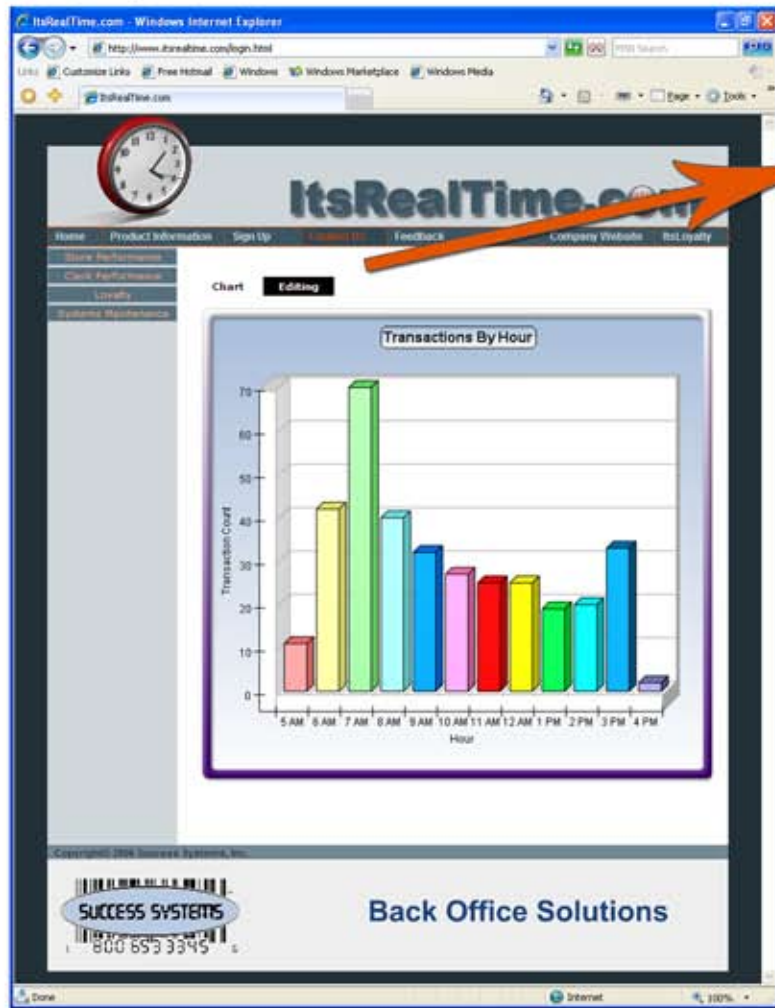
**1-800-653-3345**





### Store Sales by Period

**ItsRealTime™** let users monitor the store(s) transactions in real time by dollar amount, number of transactions or average transaction dollar. This report is located on the Store Performance section. The Store Sales report, as well as many others found in our application, is customizable by clicking on the *Editing* button on top of the graph. Users can get over a million different graphical presentations by editing our data parameters.



### Editing Window

The "Editing Window" is a configuration panel with the following sections:

- Data:**
  - Pick Data To Chart: Transaction Count
  - Pick Date Grouping: Hour
- Filters:**
  - Date Range: Today
  - Beginning Hour: 1 AM
  - Ending Hour: Midnight
  - Cashier: All
  - CustomerType: All Customers
- Set Formatting:**
  - Series 1:
    - Bar style: Bar
    - Bar color: Color [Green]
    - Data label format: None
  - Series 2:
    - Bar style: Bar
    - Bar color: Color [Cyan]
    - Data label format2: None
  - Misc Settings:
    - Different colors
    - Lights
    - Use Origin

Buttons at the bottom: "Download Chart Data (Visible)", "Download Chart Data (All)".

Users can edit the graphic using the following parameters:

- Sales data
- Date range
- Customer type
- Cashier
- Type of graphic

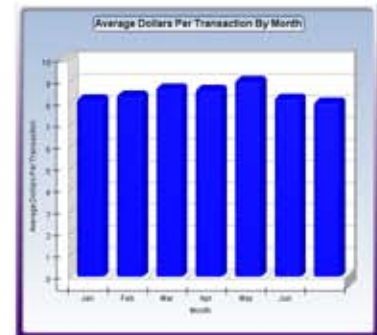
Flexible graph formatting that let users obtain different charts by editing store data parameters:



Last Month Total Sales (\$)



This Week Sales (\$) over Last Week Sales (\$)



Monthly Average Sales (\$) per Transaction



### Store Sales by Major Category

Users can monitor in real time their dollar transactions, number of transactions and average dollar transaction by the store's major categories without waiting for the end of the shift. **ItsRealTime™** brings up to the second the store(s) transactions by department. Store operators can generate reports of their major categories by hour, day, month or any other date range available.

This report is located under the Store Performance section.

The screenshot shows the ItsRealTime.com web interface. On the left is a 'Chart Formatting' sidebar with the following options:

- Pick Data To Chart: Transaction Dollars
- Explode mode: No exploded pies
- Filters:
  - Date Range: Last Month
  - Beginning Hour: 1 AM
  - Ending Hour: Midnight
  - Cashier: All
  - Customer Type: All Customers
- Buttons: Download Chart Data (Visible), Download Chart Data (All)

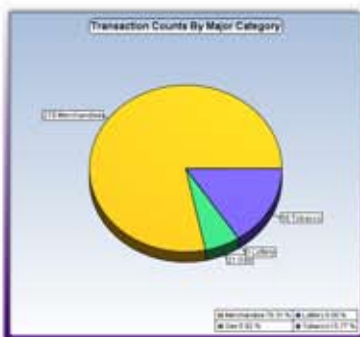
The main content area displays a pie chart titled 'Dollars By Major Category' with the following data:

Category	Percentage
Merchandise	23.66%
Oat	52.86%
Lubery	9.00%
Tobacco	23.48%

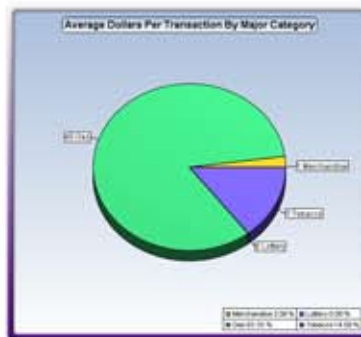
Users can edit the graph using the following parameters:

- Sales data
- Date range
- Customer type
- Cashier

Flexible graph formatting that users can modify by editing store data parameters:



Number of Transactions by Major Category



Average Dollars Per Transaction By Major Category



### Store Sales by NACS Category

ItsRealTime lets users show store sales by NACS categories helping users to compare their store(s) sales with the industry average and standards. Users can run this report by number of transactions, total dollar amounts and average dollar transaction. This report is part of the Performance section.

#### Editing Window

**Chart Formatting**

Pick Data To Chart: Transaction Dollars

Explose mode: No exploded pies

**Filters**

Date Range: Today

Beginning Hour: 1 AM

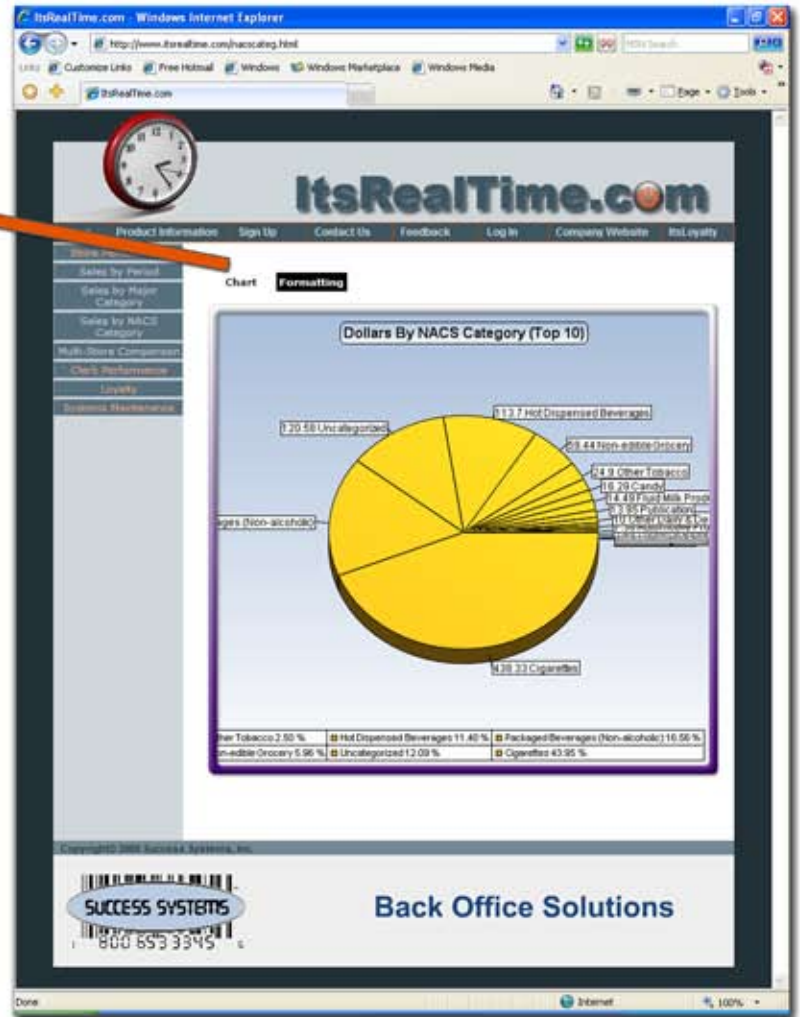
Ending Hour: Midnight

Cashier: All

Customer Type: All Customers

Download Chart Data (Visible)

Download Chart Data (All)



Users can edit the graph using the following parameters:

- Sales data
- Date range
- Customer type
- Cashier



**ItsRealTime** reports are very flexible and easy to use. Users can modify their reports by clicking on the formatting button, located on the left-top corner of the chart. Store operators will be able to select many variables such as store data, date range, customer type, cashier and many other options. To see their changes, users can click on the Chart button for their updated graphic.

**ItsRealTime** also let users download their chart data into their local PC in an Excel format.



### Cashier Utilization

Measure cashier utilization and improve store's operating efficiency using our real time reports. Users can analyse store transactions per cashier by hour or day of the week letting users decide when to add a second cashier.

#### Editing Window

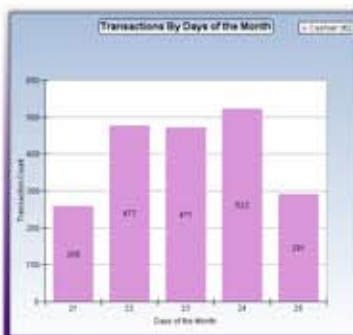
Chart Formatting	
<b>Data</b>	<b>Formatting</b>
Pick Data To Chart	Stack style:
Transaction Count	Stacked
Pick Date Grouping	Data labels:
Hour	Value
<b>Filters</b>	Bar style:
Date Range:	Bar
Today	
Beginning Hour:	
1 AM	
Ending Hour:	
Midnight	
Cashier:	
All	
Customer Type:	
All Customers	
<input type="button" value="Download Chart Data (Visible)"/>	
<input type="button" value="Download Chart Data (All)"/>	



Users can edit the graph using the following parameters:

- Sales data
- Date range
- Customer type
- Cashier

Customize your graph by changing chart parameters



Daily Transactions per Cashier



Monthly Dollars per Cashier



Monthly Transactions by Cashier #1



## Ring Errors

Improve store operations by tracking store ring errors as they happen. **ItsRealTime™** lets users receive instant e-mail alerts and also see error transactions by store, cashier, hour, day, week or month.

### Editing Window

**Chart Formatting**

<b>Data</b>	<b>Formatting</b>
Pick Data To Chart	Stacked style:
Transaction Count	Stacked
Pick Date Grouping	Data labels:
Hour	Value
<b>Filters</b>	Bar style:
Date Range:	Bar
Today	
Beginning Hour:	
1 AM	
Ending Hour:	
Midnight	
Cashier:	
All	
Customer Type:	
All Customers	

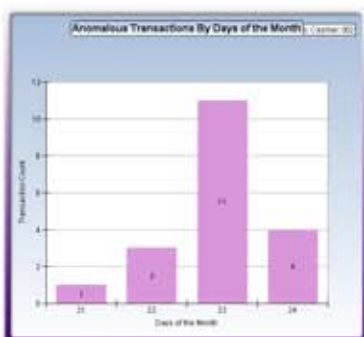
Download Chart Data (Visible)  
Download Chart Data (All)



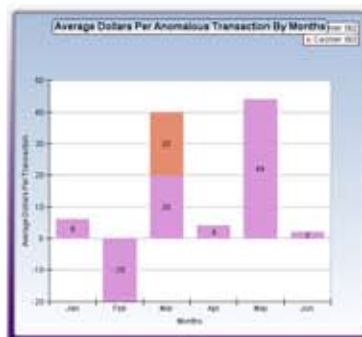
Users can edit the graph by changing the following parameters:

- Sales data
- Date range
- Store
- Customer type
- Cashier

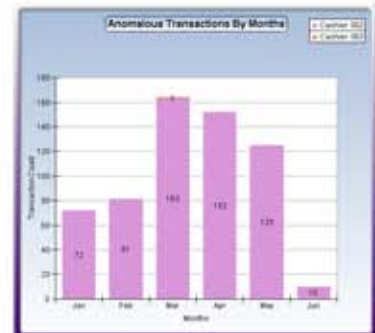
Customize your graph by changing chart parameters



Number of Daily Ring Errors



Monthly Average (\$) Ring Error per Cashier



Monthly Ring Errors per Cashier

