

StoreTM Manager Reports



(800) 653-3345

www.success-systems.com

Store-Manager Reports

This booklet is a sample of some of *Store-Manager*[™] for Windows more popular reports. *Store-Manager*[™] for Windows generates more than fifty (50) of helpful reports designed to provide clear and concise information to control your business. Unlike other industry applications, Success Systems products retain all prior detailed activity. In the event that you ever need to re-visit any prior activity, it is available by selecting that date, or range of dates.

In General, all reports when applicable are available in the following format:

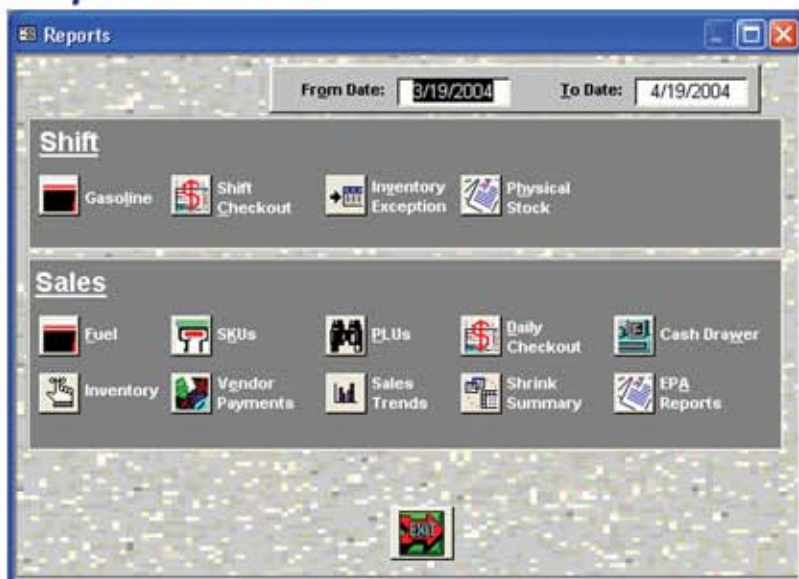
- User defined Date Range
- Full Color Graphical Representations
- Classic Text Format
- On Screen Viewing
- Compatible format for all Microsoft Windows Printers

Store-Manager[™] for Windows is a fully compliant Microsoft Windows based application. Using back up copies of *Store-Manager*[™] for Windows data, a user familiar with report generators (i.e. Microsoft Access, and Excel) can create custom ad-hoc reports.

For further information about specific reports or any other Success Systems® products please contact your authorized distributor. Or call us at:

(800) 653-3345

Reports Menu



Store-Manager's Reports

Store-Manager offers two categories of standard reports in the Reports Menu. This menu provides a number of options for analyzing sales and performance of stores over a specified time range or shift.

- **Shift Reports:** present sales or inventory information for a specific shift or day.
- **Historical Sales:** present sales analyses for fuel, scanned items, PLUs and general business information.

Drawer Report


Success Systems
P.O. Box 2457
Stamford, CT 06906

Date Range Cash Drawer Report

Print: 8/11/00 Page: 1
Time: 13:42:11
Date Range: 1/1/00 - 1/25/00 **1**

Inventory Class	Units	Dollars
CANDY	2927	\$2,208.79
BTLRTN	-613	(\$7,878.00)
TOBACO	8188	\$26,772.87
BEVG	1669	\$2,076.02
DAIRY	1270	\$2,574.38
SNACKS	2828	\$2,840.84
STANRY	5	\$5.75
GRCNTX	1814	\$2,754.46
GROCTX	5730	\$7,920.06
AUTO	596	\$1,394.29
HBA	246	\$644.06
LOTTRY	16868	\$16,870.00
FOOD	120	\$130.50
NEWS	1488	\$1,300.05
MISC	221	\$479.06
carton	17	\$553.15
DAIRY	91593.543	\$142,340.17
Total Sales	134967.54	\$202,986.45
Sales Tax Collected		\$2,780.83
Accounts Receivable Collections		\$0.00
Total to Account for		\$205,737.28
Cash Paid Out		\$3,408.52
Accounts Receivable Charges		\$6,326.98
Cash		\$129,158.79
Network Credit		\$62,380.61
Network Debit		\$3,471.34
Non-network Cre		\$335.60
Store Commercial		\$0.00
Store Credit		\$596.21
Total Accounted for		\$205,678.05
Over/Short		(\$59.23)

Location

Go to Reports Menu, on the Historical Sales section click on  Cash Drawer

Properties

The Drawer Report presents a summary of units and dollars sales by inventory class, cash balance and over/short totals. It shows concise department information, daily or by user selected dates.

- 1 Designated date range for the drawer report
- 2 Summary of units and dollars sales by department
- 3 Summary of cash balance
- 4 Over/short total

Location

Go to Reports Menu, select a date range and click on  button on the Historical Sales section.

Properties

The Daily Checkout Summary Report presents a summary of units and dollars sales by categories. It shows percentage of sales for each department by day and a range of days.

- 1 Designated date range for the daily checkout report
- 2 Daily units and dollars sales by category
- 3 Percentage of sales for each department

Daily Checkout Summary Report

Success Systems P.O. Box 2457 Stamford, CT 06906		Daily Checkout Summary Report		Print: 8/11/00 Time: 13:21:34 Daily Date: 1/25 Range Date: 1/1	
Sales Categories	Units	Dollars	Range Dollars	Percentages Today	Range
AUTO	15	\$32.61	\$1,394.29	1.59%	2.30%
BEVG	54	\$64.08	\$2,076.02	3.12%	3.42%
BTLRTN	-20	(\$169.00)	(\$7,878.00)	-8.22%	-12.99%
CANDY	67	\$53.99	\$2,208.79	2.63%	3.64%
carton	1	\$34.45	\$553.15	1.68%	0.91%
DAIRY	40	\$86.53	\$2,574.38	4.21%	4.24%
FOOD	5	\$4.67	\$130.50	0.23%	0.22%
GRCNTX	44	\$65.30	\$2,754.46	3.18%	4.54%
GROCTX	203	\$251.12	\$7,920.06	12.22%	13.06%
HBA	3	\$5.95	\$644.06	0.29%	1.06%
LOTTRY	511	\$507.50	\$16,870.00	24.70%	27.82%
MISC	1	\$1.49	\$479.06	0.07%	0.79%
NEWS	50	\$27.75	\$1,300.05	1.35%	2.14%
SNACKS	95	\$85.77	\$2,840.84	4.17%	4.68%
TOBACO	298	\$1,002.81	\$26,772.87	48.80%	44.15%
Total:	1367	\$2,055.02	\$60,646.28	100.00%	99.99%

Daily Checkout Summary Report

Inwood Plaza 1325 Inwood Road Dallas, TX 75247		Shift Checkout Summary Report		Print: 3/19/2004 10:48:57 Shift Post Date: 9/1/03 Shift Start: 8/31/2003 4:48:31 AM Shift End: 9/1/2003 4:46:31 AM
Inventory Class	Units	Dollars	Percentage	Profit
TOBACCO	51	\$167.44	13.65%	\$167.44
BEER/WINE	115	\$622.05	50.72%	\$286.90
SOFT DRINK	41	\$44.90	3.66%	\$44.90
FOUNTAIN	12	\$11.38	0.93%	\$11.38
TAXABLE GROC	269	\$291.90	23.80%	\$443.35
NONTAX GROC	60	\$81.66	6.66%	\$81.66
DELI	1	\$1.00	0.08%	\$1.00
LOTTO	1	\$1.00	0.08%	\$1.00
SCRATCH LOTTE	22	\$85.20	6.95%	\$85.20
LOTTO WIN	-11	(\$80.00)	-6.52%	(\$80.00)
Total Sales	561	\$1,226.53	100.00%	\$1,042.83
Fuel	1387.8	\$2,242.88		\$623.40
Meak Tax Collected		\$0.00		
Sales Tax Collected		\$95.33		
Accounts Receivable Collections		\$50.00		
Discounts		\$0.00		
Total to Account for		\$3,614.74		
Cash Paid Out		\$45.60		
Accounts Receivable Charges		\$20.00		
CASH		\$2,358.73		
CREDIT		\$1,052.35		
DEBIT		\$112.43		
Total Accounted for		\$3,589.11		
Over/Short		(\$25.63)		

Location

Go to Daily Work area and click on



Properties

The Daily Checkout report presents a summary of units and dollars sales and profit by inventory class, cash balance and over/short totals. It shows concise department information, daily or by user selected dates.

- 1 Designated date range for the daily checkout report
- 2 Summary of units and dollars sales, percentage and profit by department
- 3 Summary of cash balance
- 4 Store-Manager totals up your over/short expense for your selected dates

Inventory Asset Report by Class

Location

Go to the Setup area, select the Inventory Classes option and click on



Properties

The Current Asset Report by classes summarizes the wholesale and retail value of current inventory by inventory class. Values are calculated by using Quantity On Hand, Weighted Average Cost and current Retail Price.

- 1 List of departments
- 2 Cost and retail value

Inventory Asset Report By Class			
Parent Class	Child Class	Wholesale Cost	Retail Price
ACCESS		\$218.71	\$437.42
	TOTAL: ACCESS	\$218.71	\$437.42
BEER		\$3,277.51	\$12,142.73
	TOTAL: BEER	\$3,277.51	\$12,142.73
CANDY		\$938.52	\$1,855.71
	TOTAL: CANDY	\$938.52	\$1,855.71
CASH CARDS		\$0.00	\$0.00
	TOTAL: CASH CARDS	\$0.00	\$0.00
COFFEE		\$527.96	\$1,055.92
	TOTAL: COFFEE	\$527.96	\$1,055.92
FTN DRNKS		\$210.89	\$421.79
	TOTAL: FTN DRNKS	\$210.89	\$421.79
Fuel		\$0.00	\$0.00
	TOTAL: Fuel	\$0.00	\$0.00
FUEL DEPOSIT		\$0.00	\$0.00

EPA Report

Location

Go to Reports Menu, select date range, and on the Historical Sales section click on



Properties

The EPA report shows tank readings, fuel sales, fuel deliveries, and fuel shrinkage. The EPA reports reconcile on both a 7 or 31 day basis or over a user specified time range.

Success Systems		EPA REPORT						Print: 3/11/2004	Page: 1
Standard, CT 0606								Time: 14:44:27	
								Product: UNLD	
Date	Opening 96% Inventory	Sales Disposed	Delivery Receipts	Back Inventory Balance	Closing 96% Inventory	Over (Short)	Water	Daily Variance Percent	
1/28/2001	686.00	1001.36	0.00	5886.64	3870.00	-14.64	0.00	-1.46%	
1/30/2001	3870.00	1213.41	0.00	4626.59	4618.00	-8.59	0.00	-3.38%	
1/31/2001	4618.00	1202.91	0.00	3415.09	8200.00	4785.91	0.00	405.43%	
1/31/2001	8200.00	1241.33	0.00	7020.67	7014.00	-6.67	0.00	-2.95%	
2/1/2001	7014.00	1082.04	4989.00	3020.96	3912.00	-908.96	0.00	-462.82%	
2/2/2001	3912.00	1126.95	0.00	4785.05	4761.00	-24.05	0.00	-2.13%	
2/3/2001	4761.00	1143.93	0.00	3617.07	3614.00	-3.07	0.00	-0.27%	
Total:		8011.93	4989.00			-349.07			
Signatures: _____		Date: _____							
2/4/2001	3614.00	752.05	0.00	2861.95	2837.00	-24.95	0.00	-3.32%	
2/5/2001	2837.00	1116.36	6461.00	8181.42	8215.00	33.58	0.00	3.01%	
2/6/2001	8215.00	1071.26	0.00	7143.74	7125.00	-18.74	0.00	-1.72%	
2/7/2001	7125.00	1191.16	0.00	6023.84	3990.00	-2034.00	0.00	-3.07%	
2/8/2001	3990.00	1198.48	0.00	4791.32	4770.00	-21.32	0.00	-1.80%	
2/9/2001	4770.00	1286.60	0.00	3474.40	1256.00	-2218.40	0.00	-167.89%	
Total:		6536.13	6461.00			-2342.27			
Signatures: _____		Date: _____							
Total for UNLD:		30880.03	10987.00			-3491.35			
				Allowable Variance		Total Over/Short			
				34888.03 (Total Gallons Pumped) * .0075 = 261.66		-3491.35			
				35987 (Total Gallons Delivered) * .0075 = 269.90					
				10000 (Total Tank System Volume) * .0075 = 75.00					

Fuel Charges

Fuel Charges between 2/28/2001 and 3/9/2001

Grade: *DIESEL*

1	Description	Volume 2	Taxes Paid 3
	CREDIT CARD	50628	(\$264,586.07)
	federal tax	5967	\$1,670.76
	sales tax	500	\$30.00
	state super fun	500	\$10.06
	TRUCKING	51128	\$3,920.30
	TRUCKING SR	993	\$8.31
	TRUCKING SU	50135	\$266.31

Grade: *PREM*

Description	Volume	Taxes Paid
CREDIT CARD	41963	(\$270,486.56)
federal tax	2985	\$835.80
POS FEE	1985	\$80.25
RUBY RENT F	1985	\$185.00
sales tax	2345	\$140.70
state super fun	2345	\$43.77
TRUCKING	44308	\$4,035.50
TRUCKING SR	1487	\$8.31
TRUCKING SR	1985	\$8.07
TRUCKING SU	40836	\$266.31

Grade: *UNLD*

Description	Volume	Taxes Paid
CREDIT CARD	104275	(\$270,486.56)

Location

Go to Reports Menu, click on Fuel on the Historical Sales section, then select Fuel Charges.



Properties

The Fuel Charges Report presents a detailed list of all applicable fuel charges. This report is a valuable tool for reconciling and generating sales tax or other regulatory reports.

- 1 Fuel grades
- 2 Volume
- 3 Taxes

Fuel Sales by Service Report

Fuel Sales by Service						
Date Range: 2/28/2001 To: 2/9/200						
Printed: 3/11/2004						
Station	Name	Grade	MOS/MOP	Volume	Sales(\$)	Pool Margin
01	Success Systems	DIESEL	Self/CRED	1,455	\$2,540.78	
		DIESEL	Self/CASH	566	\$995.20	
		MID1	Self/CRED	1,901	\$3,051.08	
		MID1	Self/CASH	791	\$1,272.79	
		PREM	Self/CRED	1,271	\$2,167.89	
		PREM	Self/CASH	536	\$923.36	
		UNLD	Self/CRED	9,161	\$13,373.63	
		UNLD	Self/CASH	3,754	\$5,484.11	
				19,435	\$29,808.84	0.1936953949
				19,435	\$29,808.84	0.1936953949

Location

Go to Reports Menu, on the Historical Sales section select Fuel Sales, then select Graph Sales and click on Service Report



Properties

The Fuel Sales by Service Report presents a detailed list of dollars and volume sales by method of service and payment. This report shows the most accurate pool (profit), both current and historical, margins because ScannerWare stores each day's actual product cost.

- 1 Fuel grades
- 2 Method of Service/Method of Payment
- 3 Pool margin

Location

Go to Reports Menu, on the Historical Sales section click on



Properties

The PLU Sales by Inventory Report presents dollars or volume sales by department. This report is available in graphic and traditional reporting formats.

- 1 Sales by department
- 2 Departments
- 3 Print option for graphic report format
- 4 Traditional report format
- 5 Data presented by dollar or volume sales

PLU Sales by Inventory

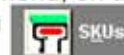


SKU Sales by Inventory



Location

Go to Reports Menu, on the Historical Sales section click on



Properties

The SKU Sales by Inventory Report presents dollars or volume sales by department. This report is available in graphic and traditional reporting formats. Store-Manager presents report information for all individual and all stores consolidated.


- 1 Sales by department
- 2 Departments
- 3 Print option for graphic report format
- 4 Traditional report format
- 5 Data presented by dollar or volume sales

Inventory Report by Group

Inventory Report by Group									
Group No: 13 - Marlboro Pack					#202004				
Product	UPC	Description	Qty On	Unit Cost	Retail Price	Prime Price	Start	End	
VOLIM 120 M	0281422	VOLIM 120 M	0	\$1.40	\$6.25	\$5.25	12/3/000	1/8/0004	
FK MAR25FA		FK MAR25FA	276	\$0.00	\$6.25	\$5.25	12/3/000	1/8/0004	
VOLIM 120	0281612	VOLIM 120	14	\$1.40	\$6.25	\$5.25	12/3/000	1/8/0004	
PARL LOHT 10	0280302	PARL LOHT 10	0	\$1.40	\$6.25	\$5.25	12/3/000	1/8/0004	
VIR SLIM UL	0281462	VIR SLIM UL	14	\$1.40	\$6.25	\$5.25	12/3/000	1/8/0004	
V/S SUPER SL	0282082	V/S SUPER SL	0	\$1.40	\$6.25	\$5.25	12/3/000	1/8/0004	
VIRGINIA SLI	0289602	VIRGINIA SLI	0	\$1.40	\$6.25	\$5.25	12/3/000	1/8/0004	
Math Mo 10000	0283422	Math Mo 10000	25	\$1.40	\$6.25	\$5.25	12/3/000	1/8/0004	
Math Mo 8x	0281272	Maths Meabbl 8x	29	\$1.40	\$6.25	\$5.25	12/3/000	1/8/0004	
Math Me4K	0282702	Maths Me4K	153	\$1.40	\$6.25	\$5.25	12/3/000	1/8/0004	
FK VIRO SLIM	0283272	FK VIRO SLIM	18	\$1.40	\$6.25	\$5.25	12/3/000	1/8/0004	
Math 100 Box	0280322	Maths 100 Box	733	\$1.40	\$6.25	\$5.25	12/3/000	1/8/0004	
PARLIAMENT M	0282042	PARLIAMENT M	1	\$1.40	\$6.25	\$5.25	12/3/000	1/8/0004	
Math Li 8x	0280492	Maths Light 8x	1840	\$1.40	\$6.25	\$5.25	12/3/000	1/8/0004	
MARLBORO LT	0281582	MARLBORO LT	0	\$1.40	\$6.25	\$5.25	12/3/000	1/8/0004	
V/S MENTHOL	0289622	V/S MENTHOL	0	\$1.40	\$6.25	\$5.25	12/3/000	1/8/0004	
VOLIM UL M	0281432	VOLIM UL M	18	\$1.40	\$6.25	\$5.25	12/3/000	1/8/0004	
Math 8x	0280312	Maths King 8x	2159	\$1.40	\$6.25	\$5.25	12/3/000	1/8/0004	
MARLBORO MED	0282712	MARLBORO MED	0	\$1.40	\$6.25	\$5.25	12/3/000	1/8/0004	

Page 1 of 2

Location

Go Setup Menu, click on Inventory. Then, select Search By Group and choose a group. Now, click on the Inventory Report icon 

Properties

The Inventory Report by Group lists all items on stock. This report helps users to easily identify quantity on hands by item.

- 1 Product Name
- 2 UPC
- 3 Quantity on hand
- 4 Unit cost and product prices

Summary by Inventory Shrink Report

Location

Go to Reports Menu, on the Performance section, click on  Shrink Summary and select Shrink Summary option.

Properties

The Summary Inventory Shrink Report is a summary of store shrink over a date range.

- 1 Date range
- 2 Product
- 3 Net Volume Change
- 4 Net Value Change


Summary Inventory Shrink Report			
1 Date Range: 9/1/2003 To: 9/30/2003			
Department - Tobacco			
Print: 3/12/2004 11:58:31			
2 Product	UPC	3 Net Volume Change	4 Net Value Change
Job 1.25	0790835	-4	(\$3.92)
1.25	07908300005	4	\$3.92
1.5		1	\$0.00
1PKDORAL		-3	(\$3.66)
2 PACKS SPECIAL		-3	(\$9.88)
2 Pk Marl Mi	02820019236	-4	(\$6.78)
2 Pk Marl Mn	02820019174	-1	(\$1.70)
2 Pk Marl Mn Lt	02820019167	-2	(\$3.39)
2Pk Dor Ff100	01230028170	1	\$2.09
Totals:		-11	(\$23.32)

Shift Checkout Gasoline Report

Simon Taylor
Hartford, CT 06106
Print: 4/23/2008 15:21:40
Shift From: 000000 10:36:38 PM To: 04/23/08 10:34:33 PM

Item	Value	Retail Dollars	Avg. Retail Unit Price	Percent	Gross Profit	Pool Margin
Self CASH						
DEESL	3,127.00	\$5.88	1.599	0.18%	\$1.69	
MCD1	4.00	\$6.00	1.499	0.22%	\$0.34	
PREM	13,715.00	\$21.93	1.599	0.77%	\$6.30	
UNLD	83,275.00	\$116.50	1.399	4.67%	\$0.76	
Total Self CASH	104,121.00	\$149.43		5.84%	\$9.82	0.094293
Self CRED						
PREM	70,540.00	\$12.84	1.599	3.96%	\$33.40	
MCD1	137,256.00	\$35.73	1.499	8.83%	\$33.85	
DEESL	344,734.00	\$423.22	1.599	14.86%	\$143.28	
UNLD	1185,12.00	\$1,838.84	1.399	66.31%	\$10.96	
Total Self CRED	\$1,677,661.00	\$2,429.95		94.86%	\$221.54	0.132082

Location

Go to Reports Menu, on the Shift section, click on , and select a shift for the report.

Properties

The PLU Traditional Format Report shows all items transactions, dollar sales and margins by item and inventory class. This report helps you to track your coffee bar.

- 1 Type of gas and method of payment
- 2 Volumen and dollar sales
- 3 Average retail price by gallon
- 4 Gross profit and pool margin

Location

Go to Reports Menu, on the Historical Sales Section, click on , and select View Report 

Properties

The SKU Traditional Format Report shows all items transactions, dollar sales and profits by item and inventory class. This report helps you to track your coffee bar.

- 1 Inventory Class
- 2 Dollar Sales by Item
- 3 Profits by Item

Analyze SKU Sales by Inventory Class

Analyze SKU Sales by Inventory Class
Print: 3/12/20
Time: 16:51:09
Shift Date Range: 2/18/2008 - 2/25/

Class	UPC	Product	Amount	Profit
MILK				
	0342200	MILK CHOCOLA	\$1.98	\$0.99
	07879610601	MILKVITD	\$29.90	\$14.95
	07879610306	CHMILK	\$11.99	\$6.00
	07879610310	2%MILKST	\$3.27	\$1.64
	07879610603	2%MILKOL	\$14.95	\$7.48
	07879610602	1%MILKOL	\$8.97	\$4.49
	07879610401	MILK32	\$3.18	\$1.59
	07879610301	MILK	\$11.99	\$6.00
	07879610502	1%MILKHG	\$5.97	\$2.99
	07879610503	2%MILKHG	\$5.97	\$2.99
	07879600308	HALFHAF	\$2.98	\$1.49
	02800024630	PT NEST QUIK	\$17.88	\$8.94
	07879610501	MILKHOVITD	\$17.91	\$8.96
	02800024570	NESTLE QUIK	\$8.94	\$4.47
	07235000034	Yoo Hoo Choc Banana	\$3.27	\$1.64
	07235000014	YOO HOO STRAWBERR	\$1.09	\$0.55
	07235000011	YOOHOO 16OZ	\$6.54	\$3.27
			\$156.78	\$78.39
Grand Total:			\$156.78	\$78.39